

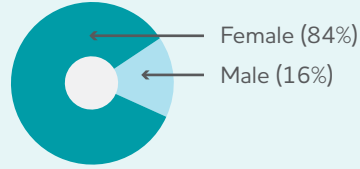
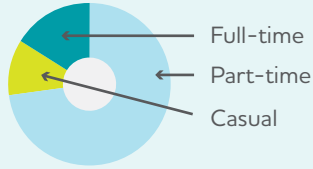
Our Impact

4,439
Employees
& Volunteers

3,691
employees



56
Chaplains



748 volunteers



helping
17,500
people to
live well

9,012
Home Care
clients

6,210
Community
Services
clients

1,724
people in
Residential
Aged Care

856
over-55s in
Retirement
Living

636
Community
Housing
tenants

across
75
locations

1,287
suburbs
served by
At Home

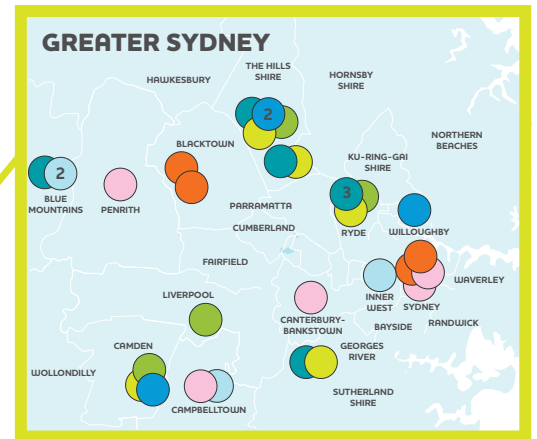
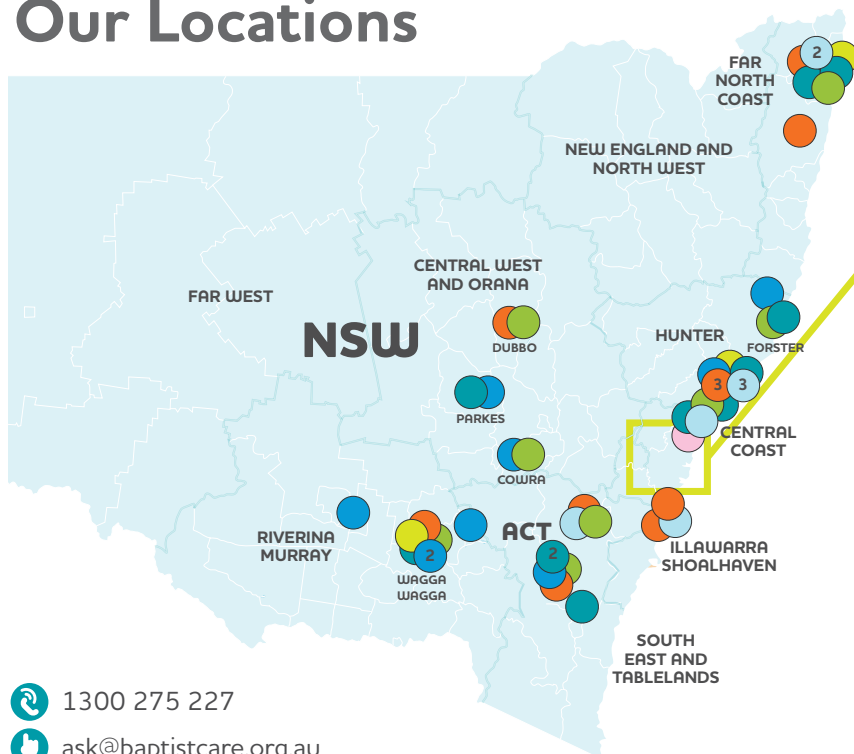
22
HopeStreet &
Counselling
locations

18
Residential
Aged Care
homes

10
Retirement
Villages

11
Community
Housing
sites

Our Locations



- 18 Aged Care Homes
- 10 Retirement Living Villages
- 1287 Suburbs serviced by At Home
- 13 Social Clubs (Respite)
- 11 Community Housing Sites
- 16 HopeStreet locations
- 6 Counselling & Family Services

1300 275 227
ask@baptistcare.org.au
baptistcare.org.au
Level Two, 22 Brookhollow Avenue Norwest NSW 2153
BaptistCare NSW & ACT ABN 90 000 049 525

