



BaptistCare
at home



Commonwealth
Home Support Program

Price Guide 2024/25

80 years
of care

*Because
we care*

We're here to help

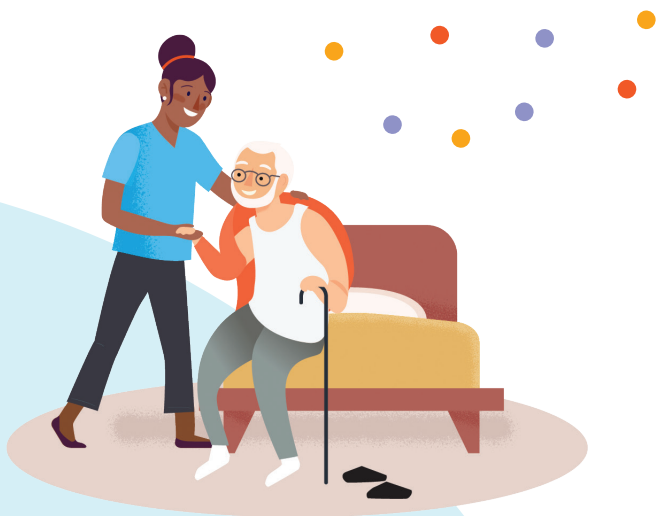
The CHSP is a Government funded program, with participants expected to make a co-contribution if they are able. Our caring staff are on-hand to provide assistance with this process.

Funding our services

Commonwealth Home Support Program (CHSP)

CHSP eligibility depends on your support needs. To find out if you are eligible, call the government service, My Aged Care on **1800 200 422** or visit them online at **www.myagedcare.gov.au**. They will arrange for an assessor to call you back or visit you at home.

While waiting for a Home Care Package or where funding does not apply, we can also support you with the help you need through the provision of privately funded services.



Price Guide for Services

Commonwealth Home Support Program (CHSP)

Prices are effective as at 1st July 2024. Services cancelled with less than 24 hours notice will be charged.

Personal Care (per hr)

Assistance with self-care	\$16
Assistance with self-administration of medication	\$16

Domestic Assistance (per hr)

General housekeeping	\$16
Unaccompanied shopping	\$16

Allied Health Services

(in-home assessment and intervention)

Physiotherapy	\$0
Occupational Therapy	\$0
Nursing	\$0

Home Modifications

Please contact us for a quote

Individual Transport (per return trip)

0 - 15kms	15 - 24kms	25 - 34kms	35 - 44kms	45 + kms
\$8.50	\$26	\$42	\$52	\$63

Flexible Respite Care (per hr)

In home

\$16

Cottage Respite Care

Weekend respite
(per night – 24hr)

\$74 - \$84

Weekday respite
(per night – 24hr)

\$64 - \$84

Long day respite
(per day – 12hr)

\$26.50

Occasional care
(per 1-4 hrs)

\$13

Individual Social Support (per hr)

In home or outing

\$16

Volunteer social visit

-

Social Club (Centre based respite and social support group)

Full day

\$21

Less than 4 hours

\$10

Additional transport costs may apply. Excludes meals and admission costs during outings.

Who is the Commonwealth Home Support Programme suited to?

The Commonwealth Home Support Program (CHSP) is an **entry-level** or **short-term program** to provide specific assistance such as general help around the home, shopping and garden maintenance.

If you require **ongoing assistance** a Home Care Package may be more appropriate.

CHSP could be right for you if:

- You only need a **small amount** of support to maintain your independence at home
- You are receiving a low level Home Care Package whilst waiting on the assignment or approval of a higher level, and have been approved to receive supplementary CHSP services
- You are on the waiting list for a Home Care Package and you have been approved to receive CHSP services until a package is assigned to you



The difference between
living and living well

Be
Well

Think
Well

Connect
Well

Well-Living with BaptistCare

BaptistCare at home is one of Australia's largest providers of the Commonwealth Home Support Program, and is proud to be able to support over 9,000 older people across NSW and the ACT with high quality home care.

BaptistCare provides all of our home care services with a focus on supporting each person to live well and maintain their independence. We take the old saying 'use it or lose it' seriously, and are committed to working alongside and supporting each person to make the most of their individual abilities and to remain as independent as possible.

Our Be Well, Think Well, Connect Well approach focuses on the many aspects of life that are important to each of us. While the CHSP program is directed to providing low level care and supports, all of our staff are trained to look for the small things that are important to each individual, to look for opportunities to assist, and to be responsive to each person's priorities and preferences.

Thank you for choosing BaptistCare at home.

See what's possible...

Call 1300 275 227

www.baptistcare.org.au/athome